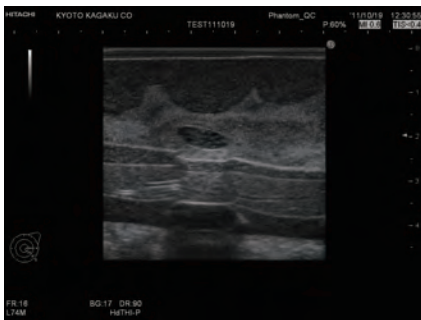
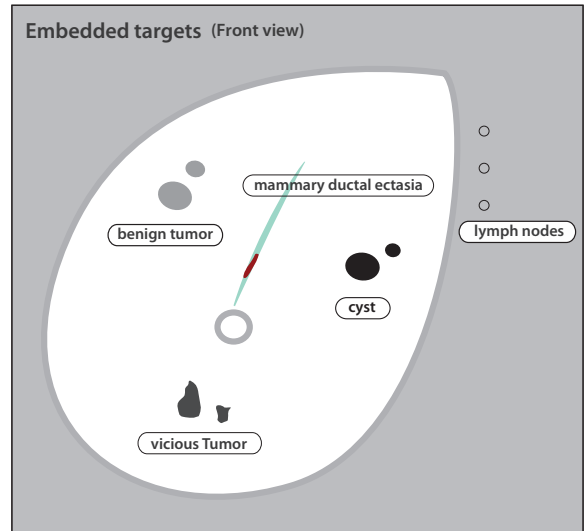


# Breast Ultrasound Examination Phantom "BREAST FAN"

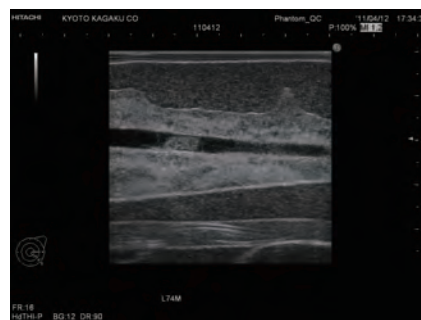
Product No. **US-6**

A unique phantom for training in basic breast ultrasound examination.

Simulated targets with different echogenicities are embedded in the phantom mammary gland. The subcutaneous adipose, the mammary gland, the galactophore, Cooper's ligament, the retromammary adipose, the costae, the clavicle, the pectoralis major and the lung can be visualized as well as the lymph nodes at axilla.



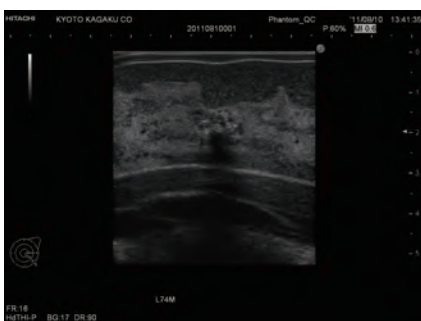
benign Tumor



mammary ductal ectasia



lymph nodes



vicious Tumor



cyst